



COMMON WRITTEN EXAMINATION

All rights reserved

NVQ Level 05 - Semester I		
Quantity Surveying		
Drawing Practice for Quantity Surveying	F45C002M05	Three Hours
* Answer all questions		

Question No 01

Annexure 01 and Annexure 2 has shown a plan of a two storied building (both stories fully same size design - height of the floor 3200mm) with 250 mm thick brick walls & corrugated asbestos cement sheet roofing on timber frame. The slope of roof is 10^0 & eaves projection is 900 mm from external walls.

Using appropriate scales draw the followings & label properly.

1. Floor Plan (25 Marks)
2. Section through X –X (20 Marks)
3. Front Elevation (25 Marks)
4. Design light points & fan points & mark it on the floor plan (10 Marks)

Assume reasonable values or any suitable assumptions for any data not given & clearly state such assumptions.

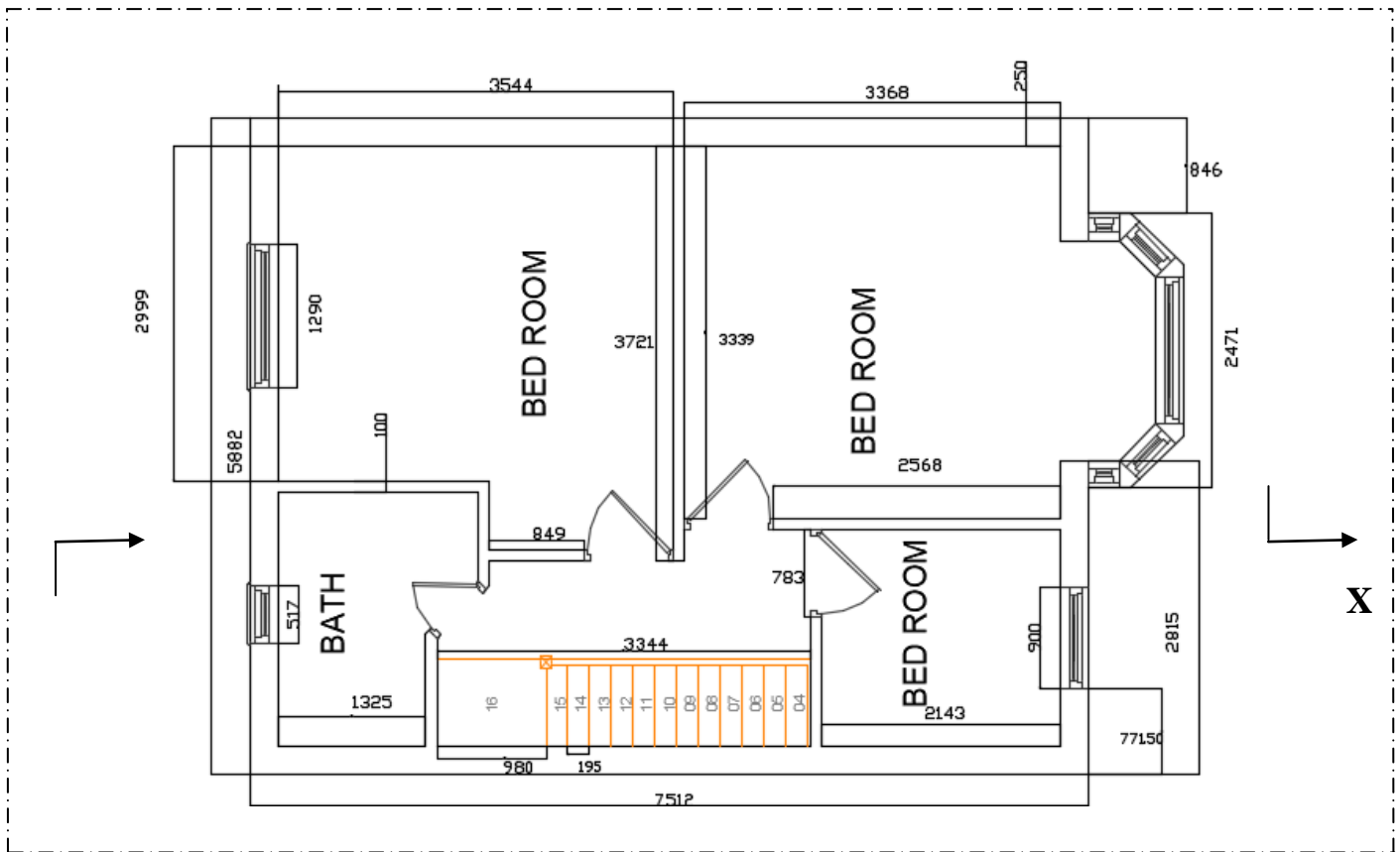
Question No 02

State the most suitable AutoCAD software tool for the following functions

- a) Erasing a part of an object.
- b) Drawing a parallel line with equal length to given line.
- c) Taking a source object to another place.
- d) Modifying dimensions.
- e) Create a mirrored copy of source object.

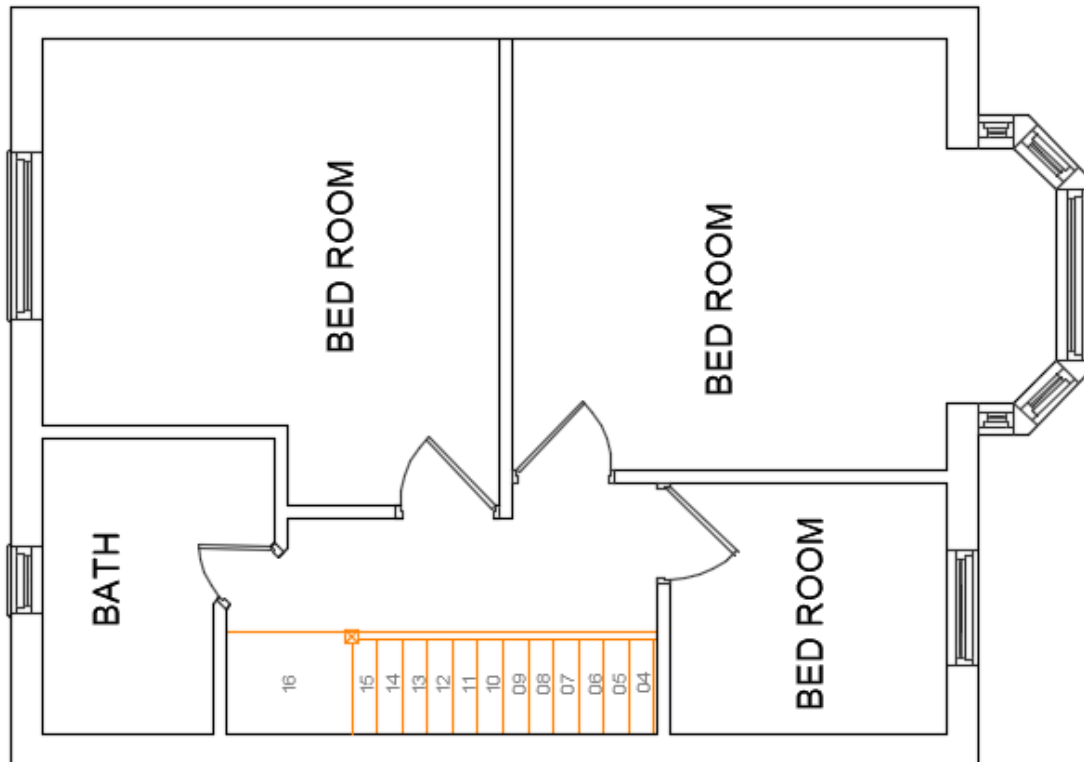
(20Marks)

Annexure 01 (with dimension)



Plan view

Annexure 02 (without dimension)



Plan view

Schedule of door and windows		
All doors	783 x 2400	Timber paneled door
Window type 1	517 x1650	Glazed window
Window type 2	900 x1650	Glazed window
Window type 3	1290 x1650	Glazed window
Window type 4	2471 x1650	Glazed window