



*All Rights Reserved*

<b>Tertiary and Vocational Education Commission</b>		
<b>NVQ Level 05 –Semester I</b>		
<b>Drawing Practice for Quantity Surveying</b>	<b>K72T001M01</b>	<b>Three Hours</b>
<b>Answer all questions.</b>		

**Question No 01**

Annexure 01 has shown a plan of a single storied building with 225 mm thick brick walls & corrugated asbestos cement sheet roofing on timber frame. The slope of roof is  $12^{\circ}$  & eaves projection is 900 mm from external walls.

Using appropriate scale draw the following & labelled properly.

- |   |            |
|---|------------|
| 1. Floor Plan   | (25 Marks) |
| 2. Section through X –X   | (20 Marks) |
| 3. Front Elevation  | (15 Marks) |
| 4. Design suitable foundation detail                            | (25 Marks) |
| 5. Design light points & fan points & mark it on the floor plan | (10 Marks) |

Assume reasonable values or any suitable assumptions for any data not given & clearly state such assumptions.

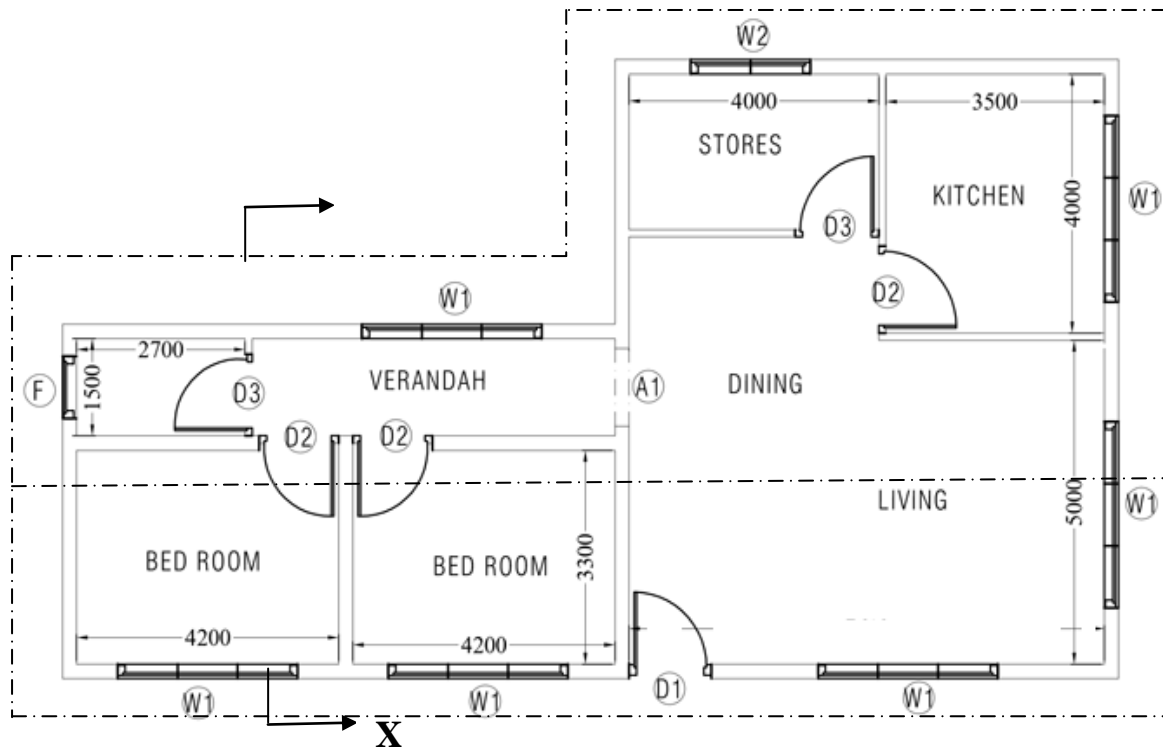
**Question No 02**

State the most suitable AutoCAD software tool for the following functions

- Erasing a part of an object.
- Drawing a parallel line with equal length to given line.
- Taking a source object to another place.
- Modifying dimensions.
- Create a mirrored copy of source object.

(05 Marks)

## Annexure 01



SCHEDULE OF DOORS AND WINDOWS		
TYPE	SIZE	DESCRIPTION
D1	1200 X 2400	TIMBER PANELLED DOOR
D2	900 X 2400	TIMBER PANELLED DOOR
D3	825 x 2100	TIMBER PANELLED DOOR
W1	1800 X 1650	GLAZED WINDOW
W2	1200 X 1650	GLAZED WINDOW
F	1200 X 600	GLAZED FANLIGHT
A1	1200 X 2400	FLAT ARCH